

# WET

the magazine of gourmet bathing



PER

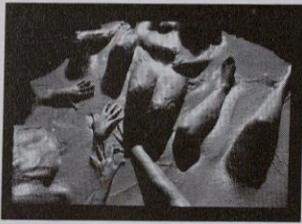
MoMA  
Library

**\$1 ISSUE 5  
FEB/MAR 77**

# WET

the magazine of gourmet bathing

## IN THIS ISSUE



### Cover

Ginny Livingston and Jayme Odgers enjoying the wholesome goodness of Raby Blake's heated mudbath. Photographed by Guy Webster.

### 5 Letters

### 8 The Healing Waters



"Give me your tired, your poor, your hungry huddled masses...and put them into my jacuzzi." An interview with healer Bobby Klein.

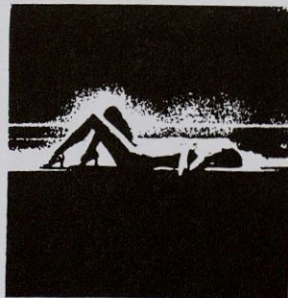
### 12 Mud Mama

Sculptor and video artist Raby Blake discusses mud, matter and mudder.

### 16 Wo/man



Mick Jagger, David Bowie, Marlene Dietrich—and probably you too—all have a wonderful bisexual quality. Writer Peter Hassinger and photographer Antonin Kratochvil express some thoughts on this subject.



### 22 For The Greater Good

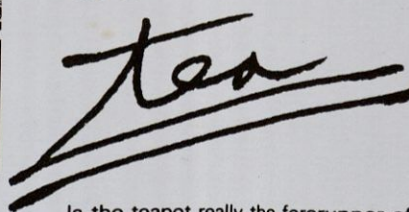


California is experiencing a severe drought but the residents of Los Angeles would hardly know it. Why? Water is being robbed by L.A. from other parts of the state claims Lauren Elder.

### 24 Places



### 30



Is the teapot really the forerunner of the bathtub? No, but it's interesting to hear what Peter Shire has to say about the physics of water pouring.

### 31 Parties

Know any good ones? Call WET photographer Fred Havens (213) 939-9288.

### 32 Dribble

### 34 Wet Tips

a.k.a. Wet to Wear.

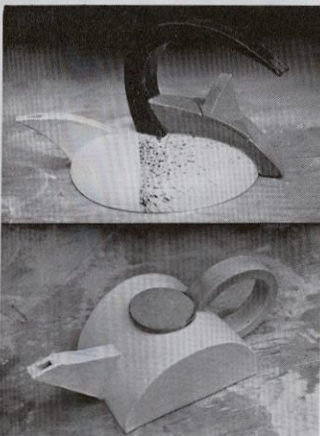
### Backcover

One of the refreshing stops along the route down the Rio Colorado of the Grand Canyon, Arizona. Picture snapped by white-water oarsman Ron Cooper.



# Tea

For some reason we thought there might be an abstract connection between the beautifully eccentric teapots of artist Peter Shire and futuristic conceptions of unusual bathing environments. Perhaps we were wrong. Nevertheless we suggest you see Peter's creations in person at the once or twice yearly events Peter disguises as pottery sales. (In the Echo Park area of Los Angeles, phone: 662-8067.)



**WET:** *I have only one question.*

Peter: Make it good.

**WET:** *How do your teapots relate to bathing?*

P: Should I bother to try and relate them? My work doesn't even relate to my own lifestyle. I'm not much of a tea-drinker. I'm really much more interested in the teapot shapes and the engineering — the physics of water, how water pours. One of my big challenges in life and in art is the last drop.

**WET:** *What do you mean by the last drop?*

P: You know, "no matter how much you wiggle and dance, the last few drops go down your pants" (laughter). If a teapot isn't engineered just right, the last one to twenty drops will come rolling back down the spout. When you get away from traditional spout shapes you're getting yourself into problems . . . problems with the water clinging to the side of the spout, water splaying out like a fan, the water not getting enough projection or pulling back. But that's the fun of it.

**WET:** *Do all of your teapots work?*

P: Yes, and some of the craziest ones work best!

**WET:** *Everything that comes in contact with water imparts some of its properties to the water. Have you ever thought about making pyra . . .*

P: . . . mid shaped teapots? I tried to make pyramid teapots at one time but in order to do it right the pyramid can't be broken and the pyramid has to have real specific measurements. I just cut it loose. But one of the shapes I often wonder about is the dome. I've always had a thing for domes. But as far as making the tea taste better or stay hotter longer or . . . (laughter)

**WET:** *. . . or give you more energy or a longer life . . .*

P: If you drink the tea too fast it will cut your throat (laughter). Actually my first impulse is to put Coke in teapots. I'm a big Coke drinker and I'd love to see Coke flowing out of the teapots and foaming on the ground.

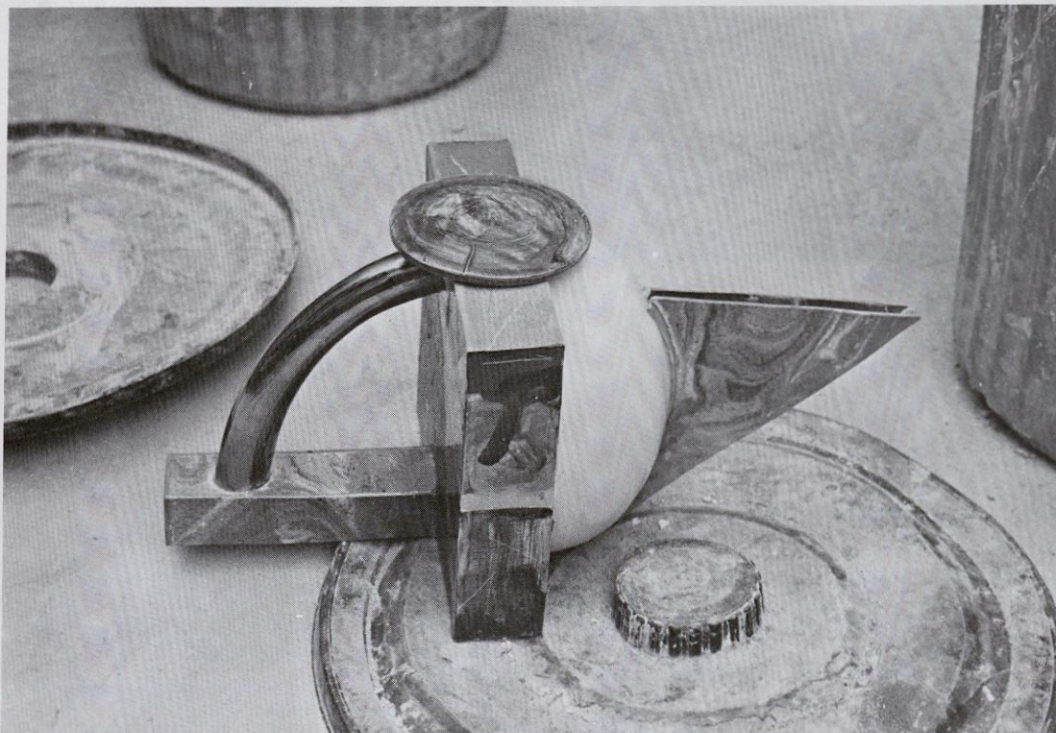
**WET:** *Ooh. That's neat!*

P: Yah.

**WET:** *Is there any relationship between your teapots and your hot tub?*

P: There's going to be. We're going to start making teapots that float so that you can sit in the bath and serve tea.

**WET:** *That's a great idea. That's wonderful. I'm sure WET will want an exclusive scoop on them when they come out.*



## SCAP PLANT



5120 SUNSET BL. • L.A. 90026 • 665 7399